

Generations Ahead

Easy, automated and verified installation of Emulex drivers and applications

Automated Installation

for Host Bus Adapters and
Converged Network Adapters

Using a simple wizard and powerful scripts, AutoPilot Installer provides enterprises with a wide range of options for installation of Windows-based drivers and management applications for the Emulex family of LightPulse[®] host bus adapters (HBAs) and FCoE converged network adapters (CNAs).

For interactive users, the AutoPilot Installer wizard allows drivers and applications to be installed for all selected HBAs and CNAs with just a few mouse clicks, saving time and eliminating multiple re-boots. After completing the installation, Emulex AutoPilot Installer verifies that each component has been successfully installed, ensuring that each LightPulse adapter is ready to use.

For automated installations, the AutoPilot Installer command can be executed standalone or added to a batch file with other installation procedures. Flexible scripting capabilities support customized LightPulse adapter driver settings that can be standardized throughout the enterprise.

KEY BENEFITS

- ⦿ Reliable deployments through a simple, guided interactive installation
- ⦿ Automated enterprise-wide installations on local and remote servers
- ⦿ Faster HBA and CNA setup by using an integrated installation process for both drivers and management applications
- ⦿ Adaptable with customizable driver and installation parameters
- ⦿ Verification of installation with full reporting and logging

KEY FEATURES

- ⦿ Streamlined installation wizard for drivers and management applications
- ⦿ Installation command for automated deployments and updates
- ⦿ One-step process for new installations and updates
- ⦿ One installation for all HBAs and CNAs
- ⦿ Option for customizable driver settings based on user input
- ⦿ Software-first installation option
- ⦿ Replicated factory and enterprise installations

Specifications

Availability

- Integrated in software kits shipping with Emulex LightPulse adapters and available from the Emulex website

OS Support

- Windows Server 2003
- Windows Server 2008
- Windows Server 2008 Core Installation

HBA Support

- All currently supported LightPulse HBAs and CNAs

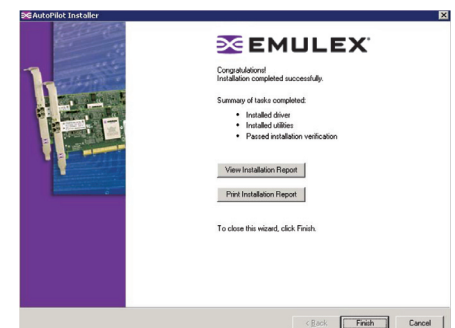
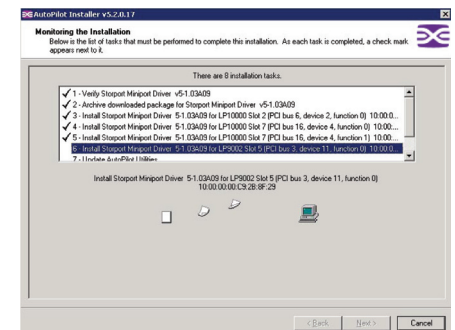
Emulex Software Support

- Storport Miniport driver
- HBAnyware GUI
- HBAnyware CLI

Additional Features

- The AutoPilot Installer wizard and scripting capabilities are powerful tools for deploying and updating Emulex LightPulse adapters. Suitable for blade and rack servers, AutoPilot Installer provides important benefits to Emulex LightPulse users:
- **Simple Wizard**—The AutoPilot Installer wizard uses a few simple mouse clicks to guide users through the installation of drivers and management applications. One process installs the driver for all LightPulse adapters on the server, saving time and eliminating multiple re-boots.
- **Scripted, Unattended Installations**—Emulex LightPulse adapter drivers and utilities are installed with a single command that can be executed in a batch file or invoked from the command line. Installations use distribution files that are stored on a local disk or a network shared drive. Installation options can be specified with command parameters or configuration file entries.
- **One Installation for Driver and Utilities**—AutoPilot Installer installs the driver for all selected LightPulse adapters and the Emulex HBAnyware management application in a single process. The combination of AutoPilot Installer and HBAnyware provides superior ease-of-use and lower management costs.
- **Core Installations**—AutoPilot installer core packages have a minimum server footprint and only include the driver and HBAnyware command line (HBACMD) components for local management. Core installations can also be managed remotely using the full HBAnyware GUI. The core package installation is done from the command line for Windows Server 2008 Core installations and can be automated for scripted, unattended installations.

- **Software First Installations**—The Emulex driver and utilities can be installed prior to the installation of any LightPulse adapters. The Emulex driver is automatically used by subsequently installed adapters.
- **Replicated Installations**—The AutoPilot Installer command supports replicated installations for multiple servers. Driver settings can be customized and then duplicated for all new servers.
- **Single Executable File**—The AutoPilot Installer package includes all appropriate x86, x64 and IA64 versions of an Emulex Windows driver and related management applications in a single executable file that can be downloaded from the Emulex or an OEM web site. The driver and management applications are bundled together to eliminate any questions of compatibility.



This document refers to various companies and products by their trade names. In most, if not all cases, their respective companies claim these designations as trademarks or registered trademarks. This information is provided for reference only. Although this information is believed to be accurate and reliable at the time of publication, Emulex assumes no responsibility for errors or omissions. Emulex reserves the right to make changes or corrections without notice. This report is the property of Emulex and may not be duplicated without permission from the Company.

08-1117 / 6/08